

# OHM-ISO

## INSULATION FAULT CURRENT MEASUREMENT

### SYSTEM DESCRIPTION

The OHM-ISO system continuously monitors insulation faults in low-voltage DC networks. The technology is based on the H-bridge principle:

- The voltage is halved via a voltage divider and, together with the input voltage, captured by measuring transducers.
- In the event of an insulation fault, the system calculates the insulation resistance and makes it available.

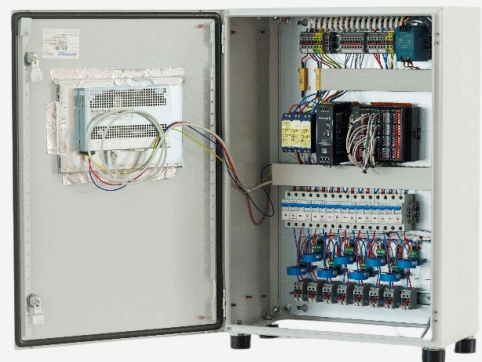
Additionally, differential current-based monitoring is performed for each outgoing feeder to enable precise fault localization.

### APPLICATION AREAS

- ✓ Energy providers & infrastructure
- ✓ Data centers
- ✓ Medical facilities & areas
- ✓ Industry
- ✓ Defense & disaster protection

### ADVANTAGES

- ✓ Customized solution
- ✓ Maximum operational safety
- ✓ Fast fault diagnosis
- ✓ Monitoring of up to 500 feeders
- ✓ Transmission of fault messages to the control center



**OHM-ISO - Efficiency and Safety for Your DC Network**